



RACE TO WORLD FIRST 2022-2

# Vault of the Incarnates

MOODBOARD V1 | 09.08.2022





GLOWING STONES IN ELEMENTAL COLORS



DRAGON EGGS & CRACKED EARTH



SPIRAL ANIMATIONS FOR STINGERS/TRANSITIONS

# Raid Design

ELEMENTS MOST COMMONLY INTEGRATED INTO THE DUNGEON:  
GLOWING GEMSTONES, ORGANIC ROCK FORMATIONS, ELEMENTAL COLORS

ELEMENTS FOUND THAT MAY HAVE STORY INTEGRATION (LESS PRIORITY, BUT COULD BE FUN TO TEST OUT)  
STEAMPUNK & HIGH-POLISHED GOLD, SWIRLS & SPIRALS, "DRAGON EGGS"[?]





GLOWING STONES IN ELEMENTAL COLORS



SOCIAL/PROMOTIONAL POTENTIAL. THESE HOPS REMIND ME OF THE DRAGON EGGS



GLOWING ELEMENT EXAMPLE WITHOUT LINES

# Overlays

MERGING THE HIGH FANTASY THEMES OF WOW WITH CONTEMPORARY DESIGN. USING LINEAR HIGHLIGHTS/GLOW WITH TEXTURAL (DRAWN) OBJECTS.

SOME GLOW, BUT NOT OVERKILL. SEPULCHER MAY HAVE HAD TOO MUCH GLOW IN RETROSPECT.



LIMITED RELEASE

LOWCOUNTRY WHISKEY CO  
NORTH CHARLESTON, S.C.

LIMITED RELEASE

USING GAUNTLET AS FLAVOR TEXT [TOP +BOTTOM IN THIS EXAMPLE]  
SEEK SECONDARY TEXT AS COPY [MIDDLE]

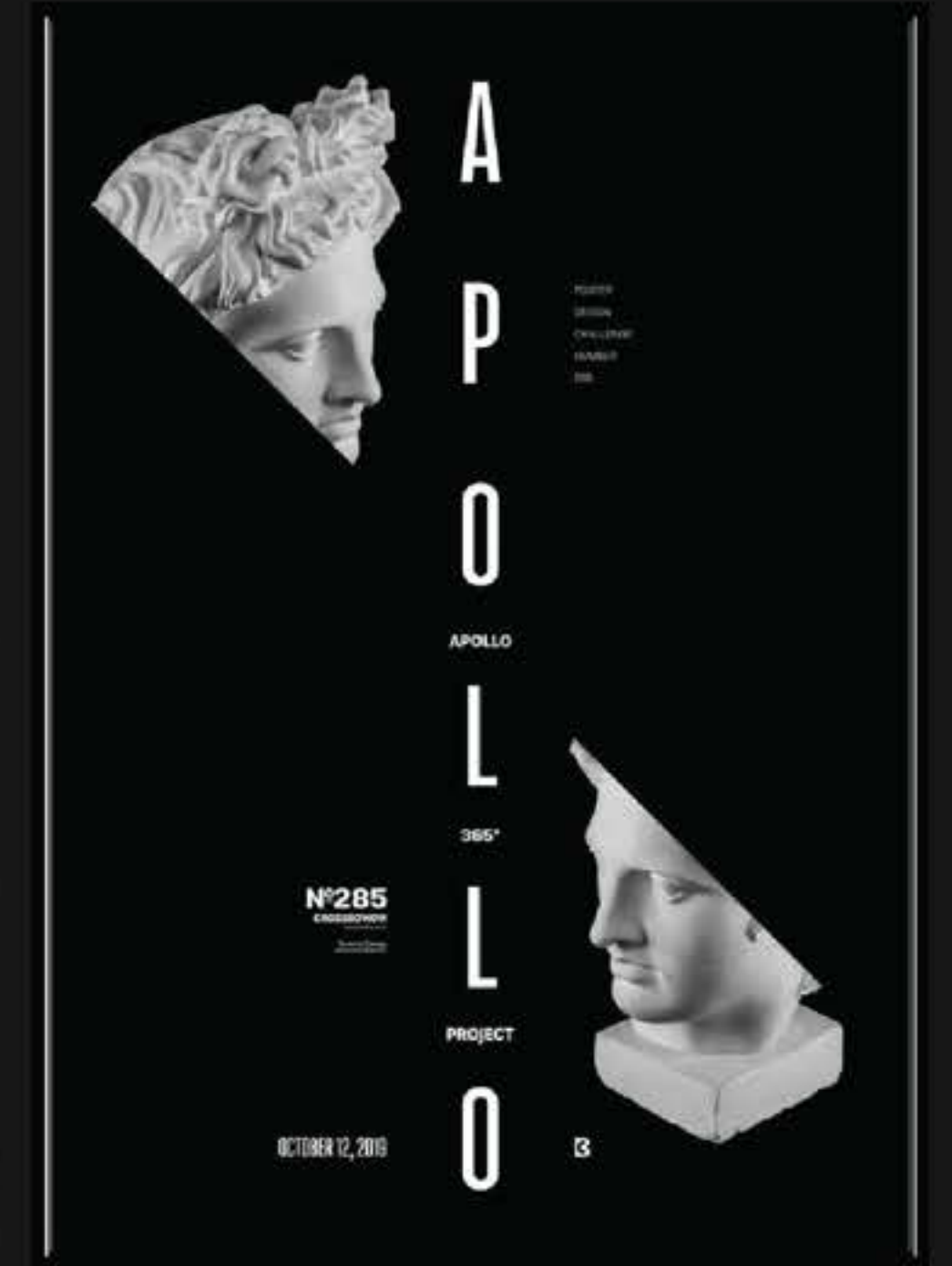
3+

numbers  
0 1 2 3 4 5 6 7 8 9  
glyphs  
. , : ; ! ? ' " ' ( )  
" " @ \_ & # % \* + -  
x ÷ = ~ < > / \ ( )  
{ } [ ] \$ | ` ^

neon styled font

full set of uppercase and lowercase characters,  
numbers and a large selection of glyphs

SOME GLOWING ELEMENT FOR SHORT/CHARACTER TEXT, PAIRED WITH  
CLEANER TYPE FOR READABILITY



NUANCED EXAMPLE OF NICE TEXT HEIRARCHY

Type

CONTINUE TO USE "GAUNTLET" AS ACCENT TEXT, POSSIBLY LOOK INTO A SECONDARY FONT. THIS WAY WE CONTINUE TO USE OUR COMISSIONED FONT BUT ALSO DEVELOP A DIFFERENT LOOK FOR THE NEW RAID.

IMPROVE ON TEXT HEIRARCHY AND NEGATIVE SPACE THIS TIME. "GAUNTLET" IS HARDER TO READ AT A SMALL SIZE, BUT LOOKS GREAT WHEN SCALED UP. DON'T LIMIT DESIGN TO FIT THE TYPE.



DON'T USE THIS FOR IT'S AESTHETIC; AN EXAMPLE OF USING COMPLIMENTARY OR CONTRASTING COLORS

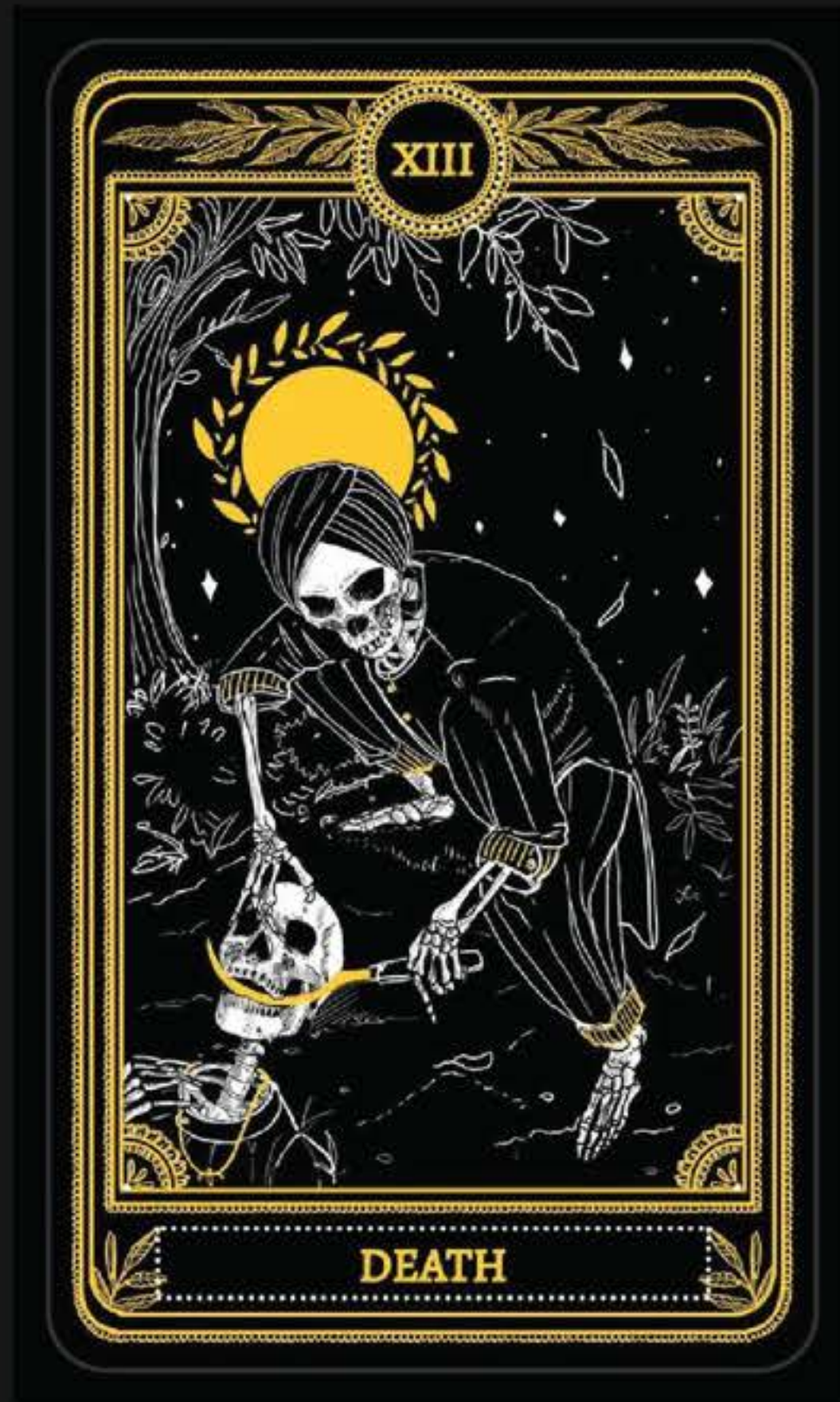


BETTER EXAMPLE OF DARKER BACKGROUNDS WITH COLOR ELEMENTS REPRESENTING "LIGHT"

# Color Distr.

4 COLORS ARE DIFFICULT TO DESIGN AROUND BUT IMPORTANT TO THE RAID. KEEP EVERYTHING BLACK/GREY MONOCHROMATIC, USE ELEMENT COLORS AS HIGHLIGHTS & GLOWING ACCENTS.

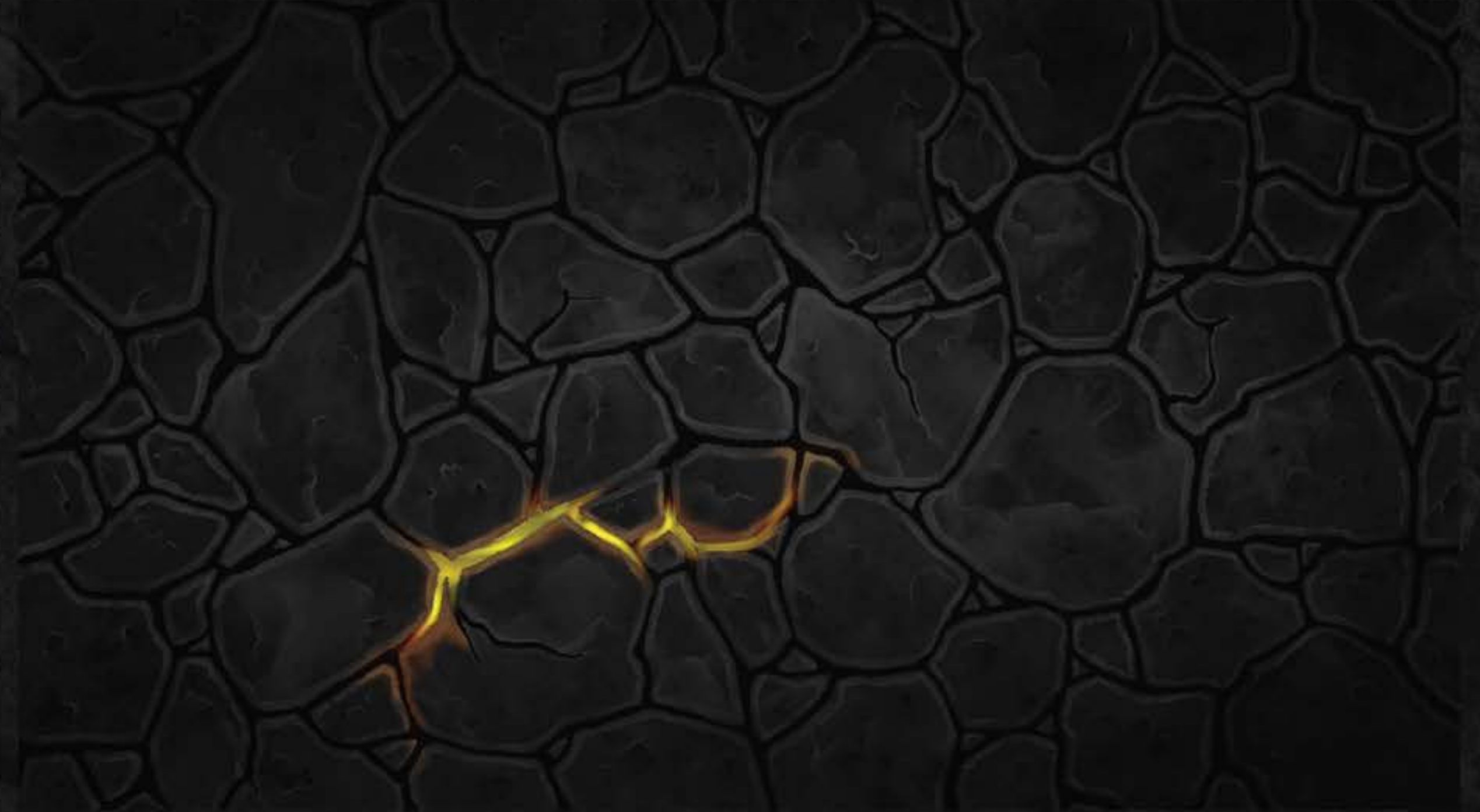
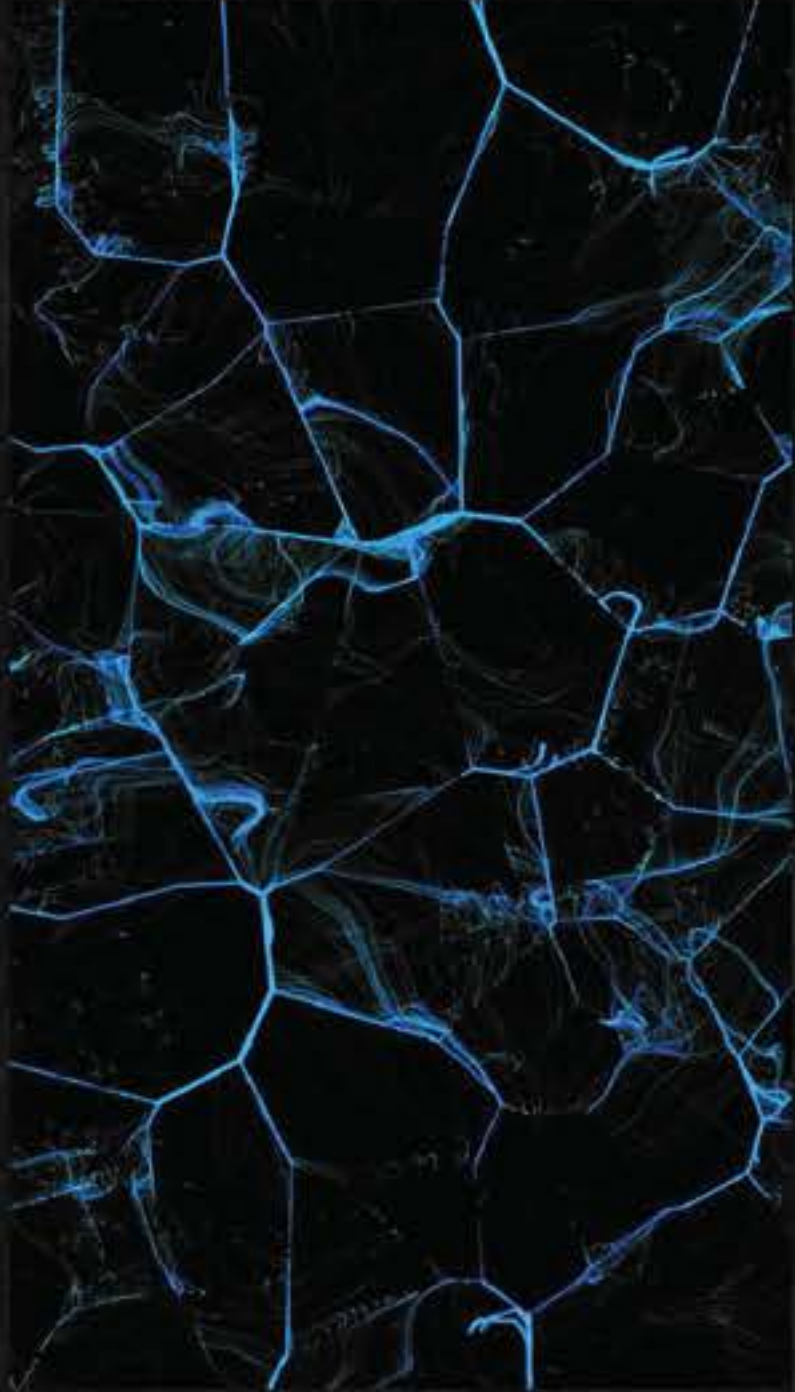




Color Distr.

ANOTHER SET OF ILLUSTRATIVE EXAMPLES THAT USE COLOR SPLASH & CONTRASTING COLORS ON PROMARILY B&W.





# Textures

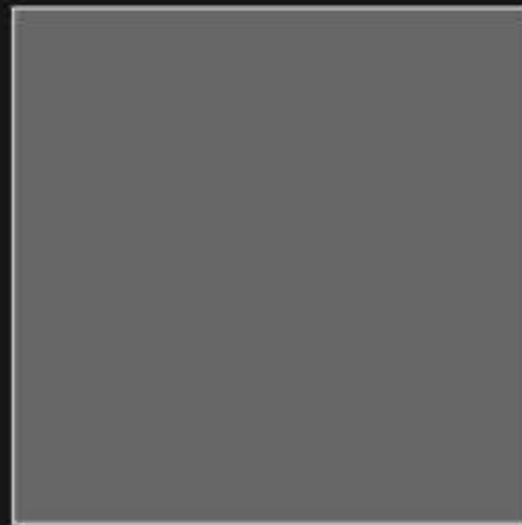
STONE TEXTURES & ELEMENTAL LIGHT COMING THROUGH CRACKED EARTH  
POTENTIALLY BRING BACK & FINE-TUNE THE FIRST DRAFT OF SEPULCHER'S BG?



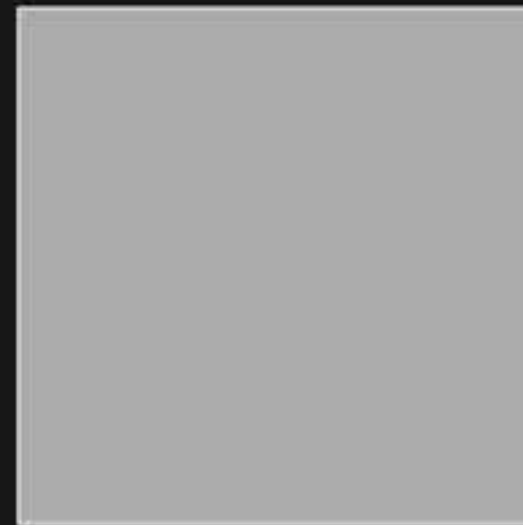
GOLDEN GUARDIANS | BDGG



GG BLACK  
#191919



STONE  
#666666



STONE HIGHLIGHT  
#AAAAAA



FIRE DRAGON  
#B43726



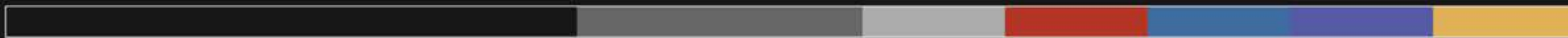
ICE DRAGON  
#3F6CA0



STORM DRAGON  
#575BA5



EARTH DRAGON  
#E0B15A



COLOR DISTRIBUTION



# Color

B&W PRIMARY  
ELEMENTAL COLOR SPLASH

OTHER COLOR CONSIDERATION, BROWN, EARTHY HUES FROM THE DUNGEON?  
FULL GRAYSCALE LOOKS MORE MODERN, EARTH TONES MORE HIGH FANTASY.  
WORKSHOP THIS LATER?